

Resilient Borders: crisis management and spatial planning

Cross-border School – Project management in practice

12-13/11/2025 Gorizia, Italy



Co-funded by
the European Union



Resilient Borders initiative: Crisis management and Spatial planning



MODERATION

Martin GUILLERMO-RAMÍREZ

Secretary General

Association of European
Border Regions (AEBR)





INTRODUCTION

Silvia GOBERT-KECKEIS

Head of administration, finance, MOT
association and European partnerships

Mission Opérationnelle
Transfrontalière (MOT)





A PROCESS - FROM THE REFERENCE STUDIES TO THE RESILIENT BORDERS INITIATIVE

Following the sanitary crisis and the closing of the borders

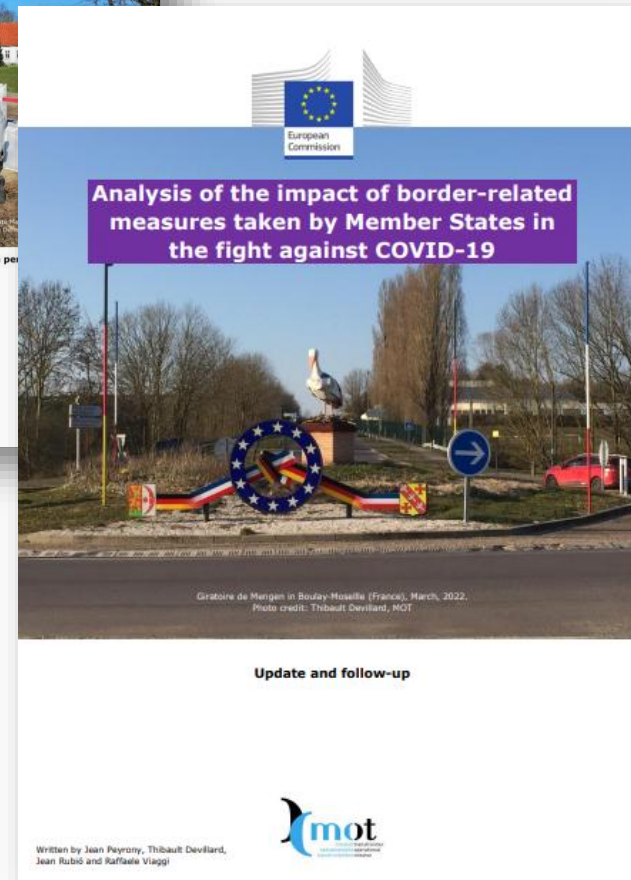
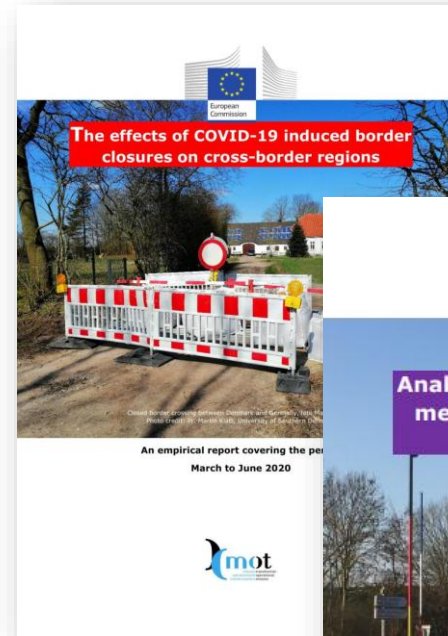
'COVID-19' studies by DG REGIO

MOT "The effects of COVID-19 induced border closures on cross-border regions" (2020)

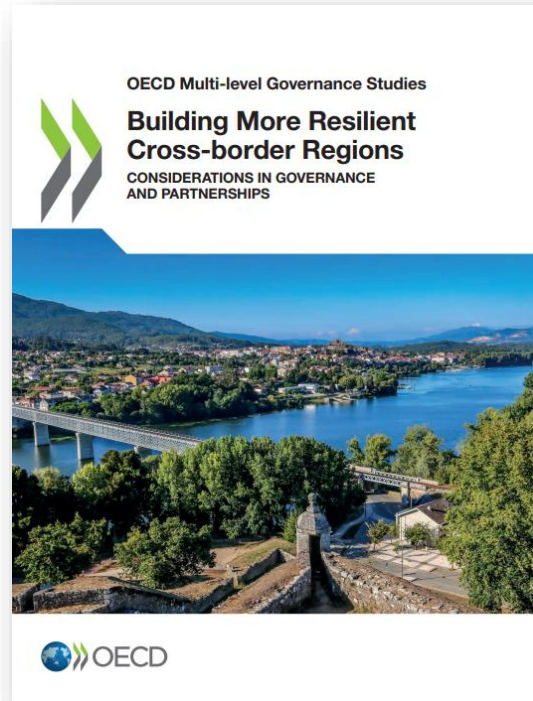
<https://op.europa.eu/en/publication-detail/-/publication/46250564-669a-11eb-aeb5-01aa75ed71a1/language-en>

MOT, "Analysis of the impact of border-related measures taken by Member States in the fight against COVID-19" (2022)

https://ec.europa.eu/regional_policy/en/information/publications/studies/2022/analysis-of-the-impact-of-border-related-measures-taken-by-member-states-in-the-fight-against-covid-19



Spatial Planning - Reference studies



Spatial Planning Pilot Actions should tend to reach progress on one or several of the goals mentioned in OECD study.

OECD & DG REGIO, Building More Resilient Cross-border Regions (January 2025)

<https://futurium.ec.europa.eu/en/border-focal-point-network/library/new-oecd-report-building-more-resilient-cross-border-regions>

Crisis Management - Reference study

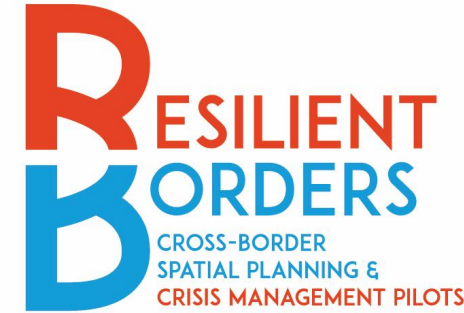


DG REGIO, Strengthening the Resilience of EU Border Regions (2024)

https://ec.europa.eu/regional_policy/information-sources/publications/studies/2024/strengthening-the-resilience-of-eu-border-regions_en

Resilient Borders initiative: Crisis management and Spatial planning

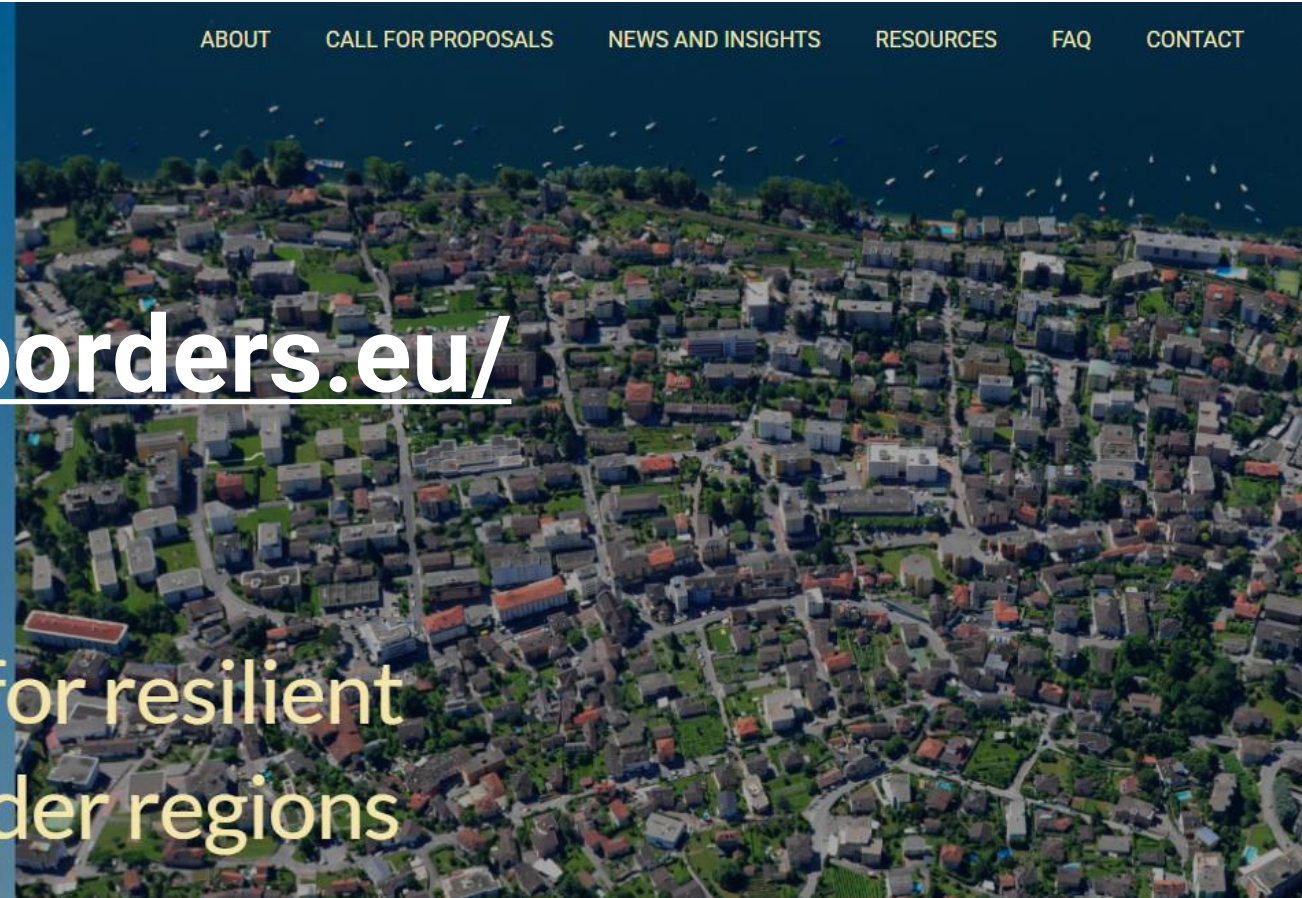
- Two lots: « **Crisis management** » & « **Spatial planning** »
- **19 pilot sites** with up to **40 000€** of sub-grants for each pilot
- Managed by the MOT & the AEBR, on behalf of the DG REGIO
- 8 months of implementation (Febr. - Sept. 2025)
- A final Publication and a Compendium (December 2025)



resilientborders.eu/

Together for resilient
cross-border regions

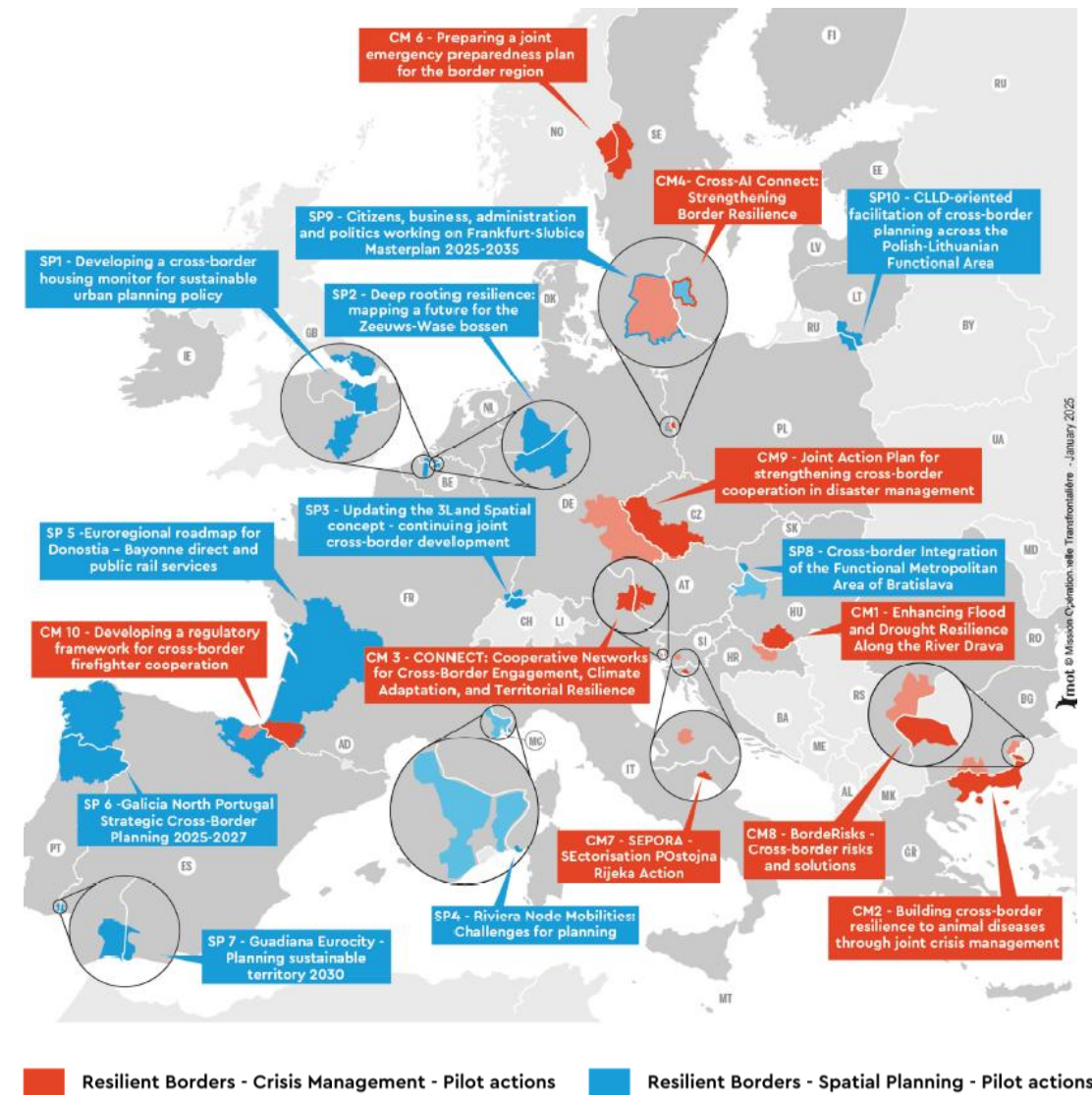
ABOUT CALL FOR PROPOSALS NEWS AND INSIGHTS RESOURCES FAQ CONTACT



Pilot Actions: a wide range of subjects to address

Crisis Management and Spatial planning issues

FLOOD AND DROUGHT
INTEGRATIVE CROSS-BORDER METROPOLIS
RESILIENCE
CLIMATE ADAPTATION COOPERATIVE NETWORKS
HOUSING MONITOR
DISASTER MANAGEMENT
ANIMAL DISEASES
DIRECT RAIL SERVICES
JOINT EMERGENCY PLAN
JOINT SUSTAINABLE PLANNING
FIREFIGHTER COOPERATION



Recipient organisations

CM1 - HU/HR - Local government of Baranya county in partnership with Virovitica-Podravina county

CM2 - EL/BG - Region of Eastern Macedonia & Thrace in partnership with Regional administration of Smolyan

CM3 - IT/SI - EGTC GO

CM4 - PL/DE - City of Słubice in partnership with City of Frankfurt (Oder)

CM6 - NO/SE - Border region ARKO

CM7 - HR/SI - City of Rijeka in partnership with Municipality of Postojna

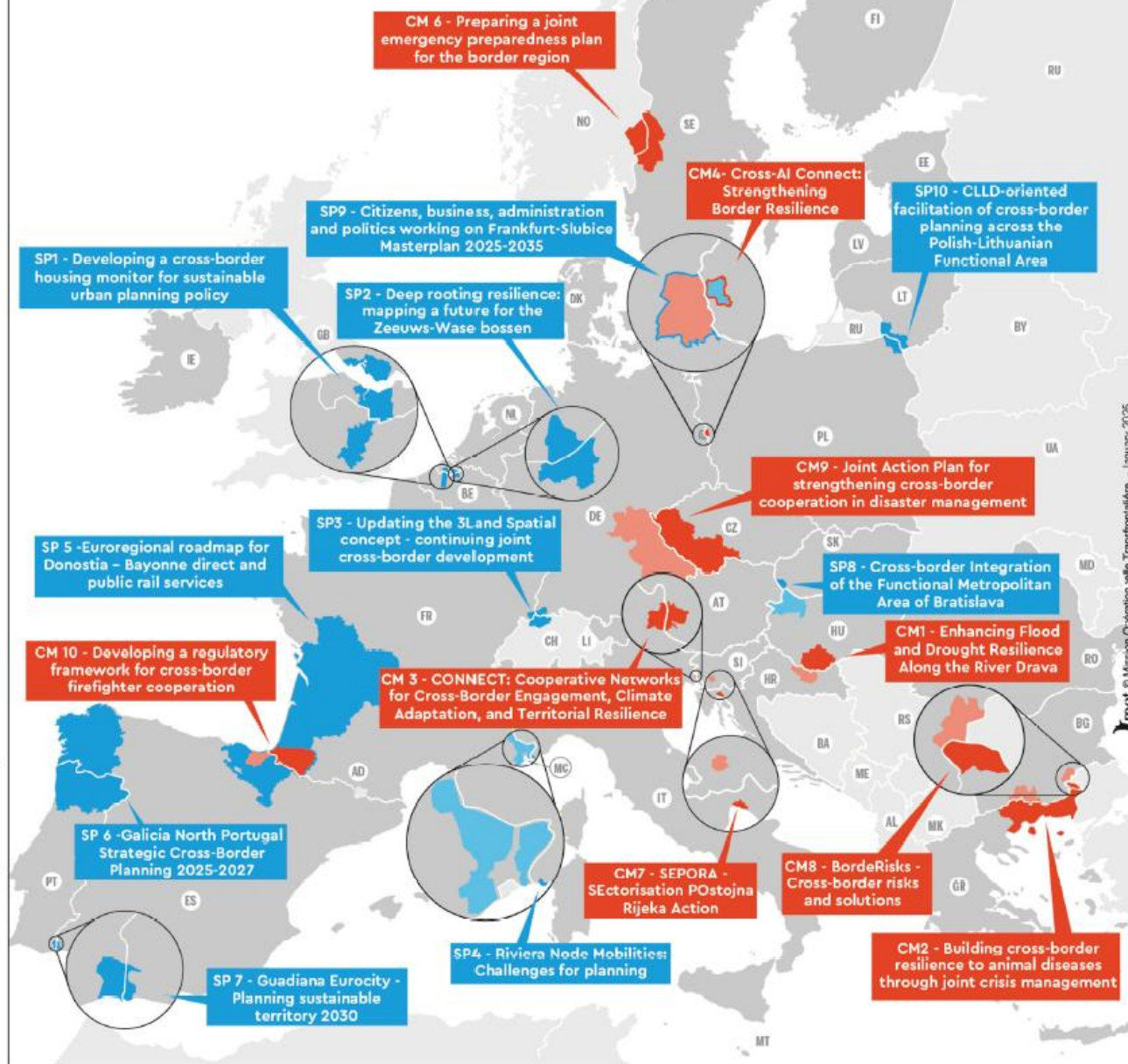
CM8 - EL/BG - Municipality of Orestiada in partnership with Svilengrad Municipality

CM9 - CZ/DE - Ministry of the Interior - Directorate General of the Fire Rescue Service of the Czech Republic in partnership with Bavarian State Ministry of the Interior, for Sport and Integration

CM10 - FR/ES - Pyrénées-Atlantiques Departmental Fire and Rescue Service (SDIS64) in partnership with Provincial Council of Gipuzkoa

■ Main recipient organisation
■ Partner organisation

Selected pilot actions
CRISIS MANAGEMENT
SPATIAL PLANNING



mot © Mission Opérationnelle Transfrontalière - Janvier 2025

■ Main recipient organisation
■ Partner organisation

Recipient organisations

SP1 - BE/NL - North Sea Port District BGTC

SP2 - BE/NL - EGTC Lineland van Waas en Hulst

SP3 - FR/DE/CH - Trinational Eurodistrict Basel

SP4 - FR/IT - Ventimiglia Municipality in partnership with Nice Côte d'Azur Metropolis and Community of Agglomeration of the French Riviera (CARF)

SP5 - FR/ES - EGTC Euroregion Nouvelle-Aquitaine Euskadi Navarre

SP6 - PT/ES - Galicia Norte Portugal EGTC

SP7 - PT/ES - EGTC Eurociudad Del Guadiana

SP8 - HU/SK - Bratislava Municipality in partnership with General Assembly of the Local Government of Győr-Ménfőcsanak-Sopron County

SP9 - DE/PL - City of Frankfurt (Oder) in partnership with Municipality of Słubice

SP10 - LT/PL - Polish-Lithuanian Cross-Border Functional Area EGTC



RESILIENT BORDERS in practice - DISCUSSION

Moderation: Martín Guillermo Ramírez, Secretary General of the AEBR

Discussants

Matteo Berzi

CB Data Hub, European
Commission's Joint Research
Centre (JRC)

Ricardo Ferreira

DG REGIO, European
Commission

Dirk Peters

AEBR Advisory Committee

Pilot Actions

Johann Dessyn

Researcher on behalf of
BGTC North Sea Port District

Anna Klunczynska

Director of EGTC Polish-
Lithuanian Functional Area

Jasna Grgurić Malović

Assistant Head of Department,
City of Rijeka

Marcin Krzymuski

Project manager at the the City
Administration in Frankfurt
(Oder) and at the Frankfurt-
Slubice Cooperation Centre

SEPORA - Sectorisation Postojna Rijeka action

City of Rijeka partnering with
the Municipality of Postojna

Hungary – Slovenia



HR/SI – City of Rijeka

partnering with Municipality of Postojna

SEPORA

Sectorisation Postojna Rijeka Action

City of Rijeka (HR) and Municipality of Postojna (SI)

Slovenia- Croatia



Co-funded by
the European Union



SEPORA - Sectorisation Postojna Rijeka Action

THE SEPORA PROJECT

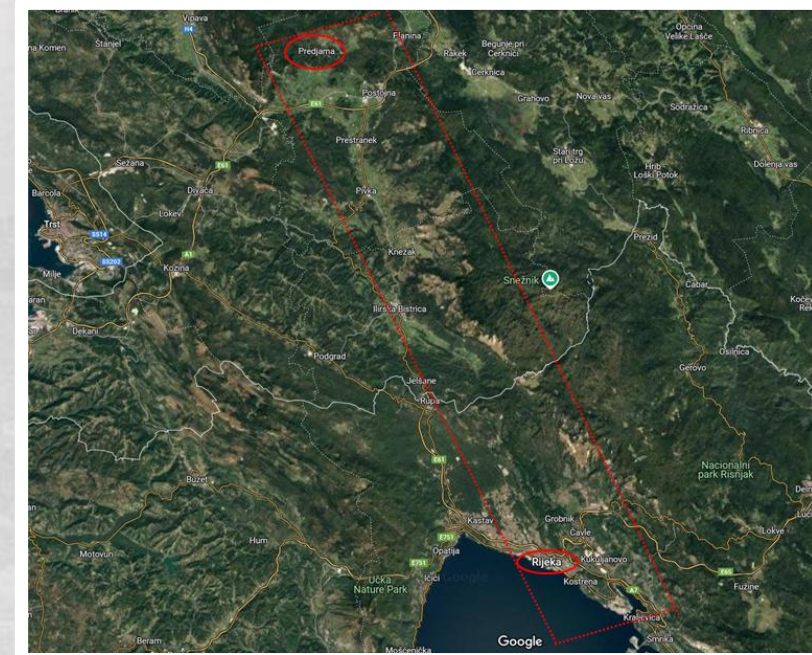
- ❖ **Partners:** the City of Rijeka (Croatia) and the Municipality of Postojna (Slovenia)
- ❖ **Key stakeholders:** public fire brigades, voluntary fire departments, emergency response units, civil protection bodies (e.g., USAR teams) and urban planners from both countries.
- ❖ **Target groups:** local communities, businesses, and vulnerable populations in Rijeka, Postojna, and their surrounding areas, who will benefit directly from enhanced crisis preparedness and response.



SEPORA - Sectorisation Postojna Rijeka Action

CONTEXT

- ❖ The City of Rijeka and its surrounding area are **located in a seismically active area**, where in the past devastating earthquakes have been recorded.
- ❖ The intensity of the strongest earthquake was **estimated at VIII° on the MCS scale (around 6 degrees on the Richter scale)**.
- ❖ The area of the Ilirska Bistrica – Rijeka – Omišalj – Novi Vinodolski tectonic unit is **characterised by increased seismic activity with a significant concentration of earthquake epicenters**.
- ❖ It is expected that in the event of an earthquake of intensity VIII°+ on the MCS scale, **the entire area covered by the SEPORA project will be affected**, and cooperation between rescue services in this area will be of crucial importance.
- ❖ The area within the scope of the SEPORA project is a logical geographical unit, so the **cooperation of the rescue services in that area is logical and necessary**.



SEPORA - Sectorisation Postojna Rijeka Action

CONTEXT

- ❖ **Urban Search and Rescue (USAR) teams**
 - ❖ specialized intervention units within Croatia's Civil Protection system
 - ❖ typically activated during large-scale events that overwhelm local capacities
 - ❖ these events may impact a single urban area or multiple regions, even crossing national borders.
- ❖ Effective disaster response requires **preemptive measures, including sectorization**, to optimize coordination and control.
- ❖ Sectorisation improves operational planning, enabling **faster and more efficient deployment of USAR teams** and simplifying incident management structures.
- ❖ **Without such frameworks, response times can increase by 12 hours or more**, a delay that can cost lives, particularly in large-scale disasters.



SEPORA - Sectorisation Postojna Rijeka Action

THE SEPORA PROJECT- OBJECTIVS

- ❖ **Develop a geographical sectorisation framework**
- ❖ **Improve incident management efficiency**
- ❖ **Strengthen cross-border cooperation and formalise collaboration**

The initial objectives have been successfully achieved through the realisation of the following activities:

- Preliminary assesments and dana collection
- Development of sectorization framework
- Definition of roles, responsibilities and communication plan
- Testing through Table Top exercise (TTX)
- Agreement development and dissemination



SEPORA - Sectorisation Postojna Rijeka Action

THE SEPORA PROJECT- RESULTS

- ❖ **Sectorization maps**-University of Rijeka's Faculty of Civil Engineering produced detailed maps with sector boundaries defined by geography, accessibility, and population density.
- ❖ **Cross-Border Communication plan**- Integrates diverse expertise and strengthens preparedness for large-scale disasters.
 - ❖ The plan engages stakeholders through structured coordination meetings and workshops.
 - ❖ The plan leverages strong cross-border partnerships including local authorities, civil protection authorities, rescue teams, firefighters etc.
- ❖ **Draft agreement on mutual assistance** - Agreement between Rijeka and Postojna was prepared formalising collaboration.

SEPORA - Sectorisation Postojna Rijeka Action

KEY LESONS

- ❖ By implementing a comprehensive crisis management framework, the regions will be **better prepared to respond to disasters, with more efficient coordination between local and cross-border actors.**
- ❖ The results, such as detailed geographical maps, sectorisation plans, and crisis management frameworks, will be **lasting resources available to both regions.**
- ❖ The developed tools will continue to **guide disaster preparedness and response** long after the project's completion, helping **reduce disaster-related risks and economic losses.**

SEPORA - Sectorisation Postojna Rijeka Action

FINALLY

- ❖ The systems developed will **remain operational even after the project has concluded**, due to the commitment of local authorities and civil protection services to maintain and build upon these efforts.
- ❖ The expected long-term impact will be a **strengthened cross-border disaster response capability** that ensures the safety of the general public.
- ❖ Integrating the Cross-Border Crisis Management Plan and the Draft Agreement **into local and regional emergency systems** and plans.
- ❖ **The developed tools can be customized and applied in different regions**, offering a scalable and adaptable solution that can be customized for different geographic and demographic contexts.



SEPORA- Sectorisation Postojna Rijeka Action
City of Rijeka (HR) and Municipality of Postojna (SI)
Slovenia- Croatia

THANK YOU
FOR YOUR ATTENTION!



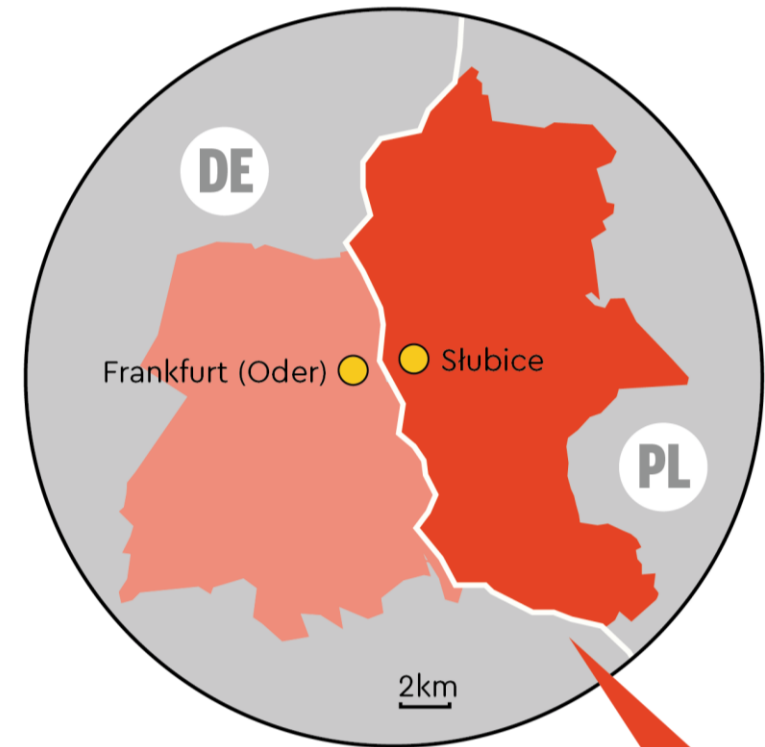
Co-funded by
the European Union



Cross-AI Connect: Strengthening border resilience

City of Slubice partnering with
the City of Frankfurt (Oder)

Poland – Germany)



PL/DE – City of Slubice

partnering with City of Frankfurt (Oder)

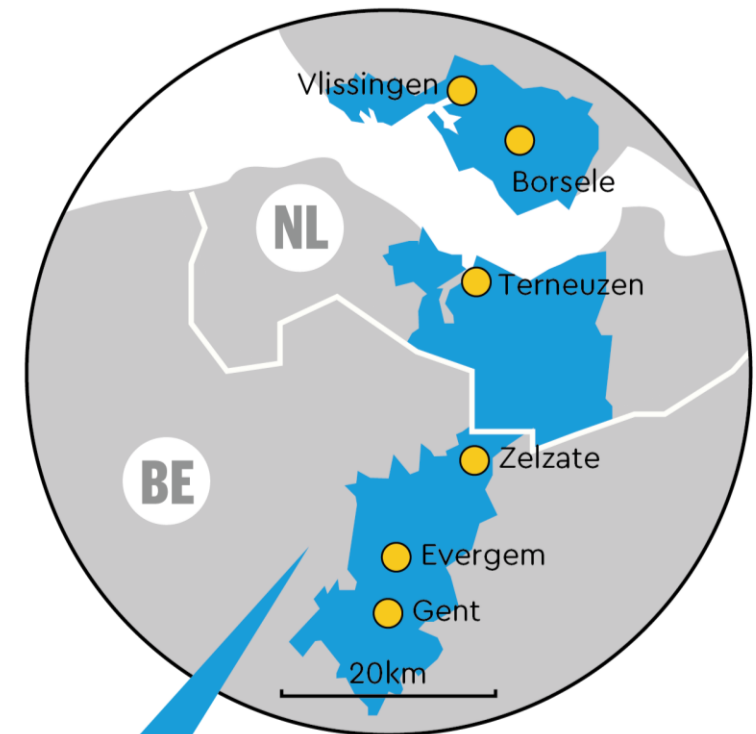
Developing a cross-border housing monitor for sustainable urban planning policy

BGTS North Sea Port District (NSPD)

Flanders (Belgium) –
Zeeland (Netherlands)

**NORTH
SEA
PORT
DISTRICT**

**RESILIENT
BORDERS**
CROSS-BORDER
SPATIAL PLANNING &
CRISIS MANAGEMENT PILOTS



BE/NL - North Sea Port District BGTC

CLLD-oriented facilitation of cross-border planning across the Polish-Lithuanian Functional Area

EGTC "Polish-Lithuanian Cross-border Functional Area"

Poland - Lithuania



LT/PL - Polish-Lithuanian Cross-Border Functional Area EGTC

Matteo BERZI

CB Data Hub

European Commission's Joint Research
Centre (JRC)



Resilient Borders : Project management in practice



Ricardo FERREIRA

DG REGIO, European Commission



REGIO

Resilient Borders : Project management in practice



Dirk PETERS

AEBR Advisor Committee



AEBR – AGEG – ARFE



RESILIENT BORDERS in practice - DISCUSSION

Moderation: **Martín Guillermo Ramírez**, Secretary General of the AEBR

Discussants

Matteo Berzi

CB Data Hub, European
Commission's Joint Research
Centre (JRC)

Ricardo Ferreira

DG REGIO, European
Commission

Dirk Peters

AEBR Advisory Committee

Pilot Actions

Johann Dessyn

Researcher on behalf of
BGTC North Sea Port District

Anna Klunczynska

Director of EGTC Polish-
Lithuanian Functional Area

Jasna Grgurić Malović

Assistant Head of Department,
City of Rijeka

Marcin Krzymuski

Project manager at the the City
Administration in Frankfurt
(Oder) and at the Frankfurt-
Slubice Cooperation Centre



DISCUSSION WITH THE FLOOR



CONCLUSION

Resilient Borders initiative: Crisis management and Spatial planning



CONCLUSION

Ricardo FEIRREIRA

DG REGIO

European Commission





END OF THE SESSION